

### Approach Plates

Protects trailer when connecting roloc box



### Coupler Extension Plates

Protects roloc box from getting caught in cross members



Cross member

### Side Rails

Protect trailer when stowing in yard and on vessel



Welcome Aboard  
Guidelines for  
*your* equipment

### Quality.

Totem Ocean is committed to continual improvement through our Quality, Health, Safety, Environment and Security Programs. As testament to this commitment, we have received the following certifications:



For bookings, call Customer Service:

Northbound: **800-426-0074**  
Southbound: **800-234-8683**

**Federal Way Corporate Office**  
32001 32nd Ave. South, Ste. 200  
Federal Way, WA 98001  
T. 1.800.426.0074  
F. 253.449.8225

**Anchorage Office / Terminal**  
2511 Tidewater Dr.  
Anchorage, AK 99501  
T. 907.276.5868  
F. 907.278.0461

**Tacoma Terminal**  
500 East Alexander Ave.  
Tacoma, WA 98421  
T. 253.238.8400  
F. 253.238.8401

**Fairbanks Office**  
2142 Airport Way, 2nd Floor  
Fairbanks, AK 99701  
T. 907.452.1022  
F. 907.451.7610



1.800.426.0074 | totemaritime.com



Let us exceed your highest expectations.





## Shipper-owned Equipment Guidelines

Totem Ocean's RO/RO service is very versatile and creates unique opportunities for our customers to ship their own equipment. While Totem Ocean encourages customers to take advantage of the program there are general equipment specifications to follow to make sure that your equipment is compatible with our vessel. The following guidelines will help ensure the equipment can be moved safer and with less damage.

### Wind skirts

- Flexible material; not rigid
- Minimum 5" clearance



### Reefer

Fuel tanks loaded behind landing legs



### Glad Hands

Need protection



No protection

Protection-lines recessed and articulated

### Brake Cans

2 per axle



### King Pin Placement

Preferably 36"



### Belly Boxes

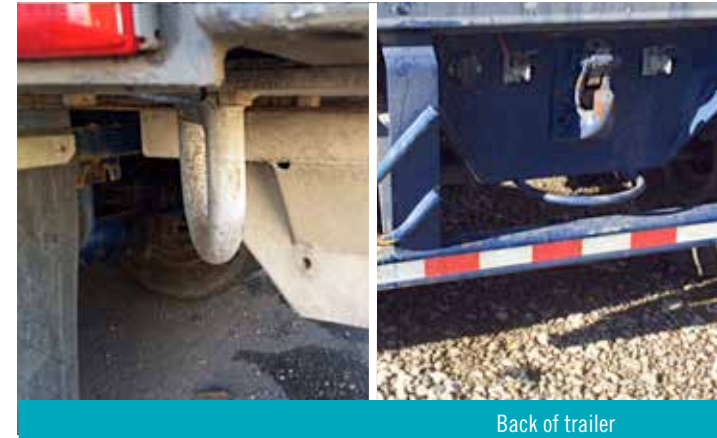
Minimum 5" clearance



### Lashing Lugs



Underside of trailer



Back of trailer